

PART OF SECTION 8, T.5N., R.1W., S.L.B. & M.
AMENDED PLAT OF
WASHINGTON TERRACE PARCEL 'B'

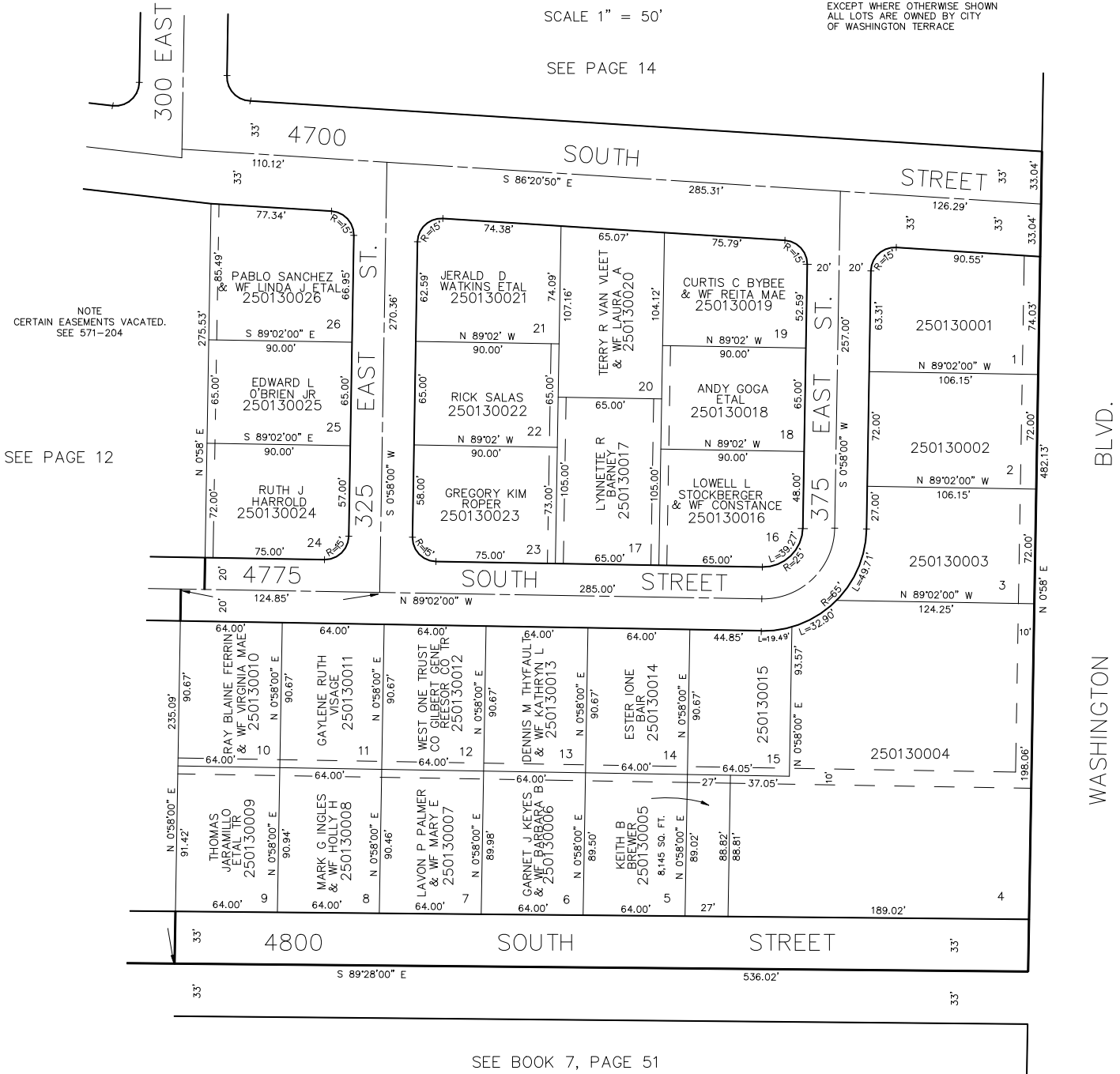
TAXING UNIT: 24

BLOCK 6
IN WASHINGTON TERRACE CITY

SCALE 1" = 50'

SEE PAGE 14

EXCEPT WHERE OTHERWISE SHOWN
ALL LOTS ARE OWNED BY CITY
OF WASHINGTON TERRACE



SEE PAGE 12

SEE BOOK 7, PAGE 51

5' UTILITY & DRAINAGE EASEMENTS EACH
SIDE OF PROPERTY LINES AS INDICATED
BY DASHED LINES EXCEPT AS OTHERWISE
SHOWN.

FOR COMPLETE ENG DATA SEE
ORIGINAL DEDICATION PLAT IN
BOOK 11, PAGE 54 OF RECORDS.